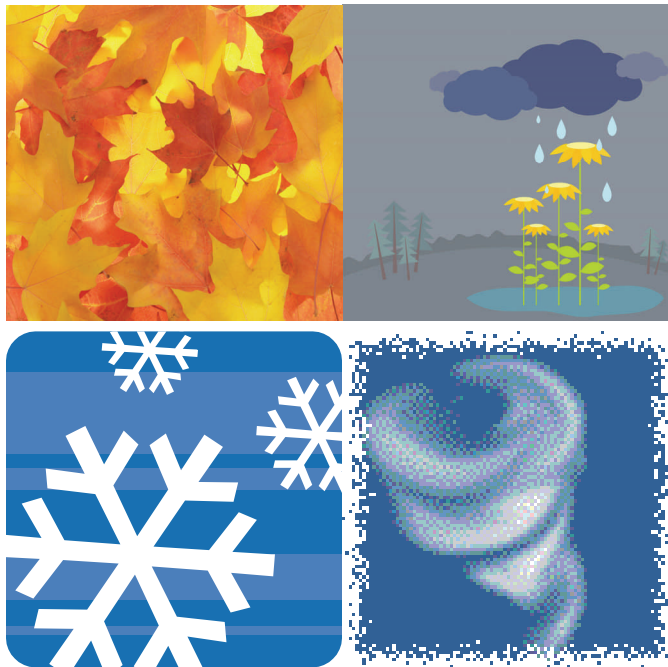


# Dallas Rose Society 2009 Fall Show

*WILD, WONDERFUL WEATHER!*



**THE DALLAS ROSE SOCIETY PRESENTS  
ITS 2009 FALL ROSE SHOW**

**AT THE  
Senior Center  
14055 Dennis Lane  
Farmers Branch, Texas**



The Dallas Rose Society  
Presents  
**“Wild Wonderful Weather”**  
2009 Fall Rose Show  
Senior Center  
Farmers Branch, Texas  
October 18, 2009

The Executive Committee and members of the Dallas Rose Society (DRS) cordially welcomes you to our annual Fall Rose Show. The theme of this year's show is “Wild Wonderful Weather,” We celebrate the great qualities of Texas weather and our wonderful roses cultivated in the great state of Texas.

Rose society members are happy to assist you with information about rose culture or the showing of beautiful roses. There are several tables for horticulture or membership information. Consulting Rosarians are also available for rose related questions, so feel free to stop by and talk with our members.

We hope you enjoy our show as much as we have enjoyed growing and showing roses to the public. The Dallas Rose Society invites you to join us in our great hobby and encourages you to become a member of the DRS and also the American Rose Society. Whether you have one rose bush or hundreds, our DRS members and Consulting Rosarians can help you get on the road to growing beautiful roses...our national flower!

Our heartfelt thanks to all the members who served on the show committees and helped staff this show, to the judges who traveled many miles to graciously give of their time and talents, and a special thanks to all the rose and arrangement exhibitors from all over the Dallas-Fort Worth Metroplex who participated in our show!

John Allen  
2009 Show Chairmen

## **Table of Contents**

Sponsors	3
2007 DRS Rose Show Committee & Judges	4
Division I	
General Rules - Horticulture Division	5
Section A - Hybrid Teas, Grandifloras, Floribundas, Polyanthas, Climbers, Shrubs, Species & Decorative roses	9
Section B - Old Garden Roses (OGR)	11
Section C - Miniature/Mini-Flora	12
Section D - Novice Classes	14
Section E - Youth Classes	15
Section F - Judges Classes	15
Section G - Seedlings/Sports	16
Division II	
Section H - Large-Flowered Challenge Classes	17
Section I - Mini/Mini-Flora Challenge Classes	19
Division III	
General Rules - Arrangement Division	21
Section A - Large Rose Arrangements	23
Section B - Miniature Rose Arrangements	24
Section C - Judges Arrangement Class	24
Division IV	
Section D - Photography Challenge	25

Division V

Section A - Naturally Grown Roses, Specimen  
Blooms.

Section B- Naturally Grown Rose Bouquets

## **A Special Thanks**

The Dallas Rose Society wishes to express our gratitude to the city of **Farmers Branch** for again supporting our rose show. Our sincere appreciation also goes to those individuals and businesses who sponsored trophies or rose bushes for the show and those organizations that provided rose displays

### **Business Sponsors**

**Kimbrew-Walter Roses, Inc.**  
**North Haven Gardens**  
**Calloway's Nurseries**  
**Chamblee's Nursery**

### **Rose Displays**

**City of Farmers Branch**

## DRS 2008 Rose Show Committee

DRS President	Kathy Harris
Show Chairperson	John Allen
Judges/Luncheon	Carolyn Hayward
Placement	Jerry Haynes and Lisa Arnold
Clerks	Jim Herbison
Awards	Colleen Skinner
Tabulations/Recording	Madelyn Lang
Publicity	Kathy Harris
Advertisements/Sponsors	Kathy Harris
Properties/Setup/Take down	John Allen
Membership	Ilene Cook
Hospitality	Lisa Arnold
CR/Education	Ilene Cook

### Judges

Carolyn Hayward	Don Johnson
David Koch	Bert Wheeler
Troy Garrett	Rose Rusnam
Raymond Hicks	Brenda Johnson

## DIVISION I/II Horticulture General Rules

1. TIME - The grooming and show area will be open at 7:00 a.m., Sunday, October 18, 2009. Entries will be accepted from 8:00 a.m. to 10:00 a.m. Judging will begin at 10:15 a.m. The rose show will be open to the public from 1:00 to 4:00 p.m.
2. GUIDELINES - This show is organized, staged, and judged in accordance with the rules and guidelines of the American Rose Society. Any questions regarding the Rose Show, not covered by ARS standards, will be resolved by the Judges Chairman or Show Chairman. The Show Committee reserves the right to remove or refuse any entry which may not be in accordance with the rules of the ARS and to eliminate or create new Classes as may be appropriate to assist in judging.
3. JUDGING - Judging will be in accordance with the appropriate ARS publications. In Horticultural Specimen Classes, each variety shall be judged as a separate subclass. During judging, only judges, clerks, and show committee personnel are permitted in show area. First, Second, Third, and Honorable Mention awards may be awarded to exhibits in each class when so warranted. Only First Place award winners may receive Certificates and/or Trophies. Judges may withhold any or all of these at their discretion. Decisions of the judges are final.
4. CLASSIFICATION - Except for entries in the Seedling/Sports Classes, roses entered in this show must be exhibited with an ARS exhibition name (AEN) to be eligible for entry in an ARS authorized rose show or they will be disqualified. Names may be verified in the following official recognized sources: *Modern Roses*, *Official List of Approved Exhibition Names for Exhibitors and Judges*, *ARS Handbook for Selecting Roses*, *Combined Rose List*, *American Rose* magazine/annual rose registration pages, or American Rose Society website recent rose registrations.

5. EXHIBITORS - Participation in the show is open to all rose growers. All exhibitors must register upon arrival and receive an exhibitor's registration number. Exhibitors may submit entries only from their own private, outdoor rose garden, except as designated in the Arrangement and the Naturally Grown Rose Divisions. Only one exhibitor or team from the same garden may enter a class. Teams must exhibit as one in the same class. The Novice Class is open only to exhibitors who have never won a First Place award in an ARS accredited rose show. The Youth Class is open only to exhibitors age 17 and under. Judges working this show may exhibit only in the Judges Class, Section F.
6. ENTRY TAGS - Each entry must be accompanied by an appropriate entry tag provided by the Rose Show Committee. Both the top and bottom sections of the entry tag must be completed showing Section, Class, Variety name, Exhibitor's name and address. Challenge Class entries, requiring multiple varieties displayed in a single container, will have one entry tag listing all varieties. Collections requiring multiple containers will have one entry tag per container. Entry tags not filled out in accordance with this schedule may face disqualification.
7. ROSE ENTRIES - All rose entries (except for arrangements, bouquets and exhibitor-owned pots) become the property of the Dallas Rose Society. The rose show committee may, at any time, remove an exhibit that has deteriorated to the point where it detracts from the quality of the show.
8. CONTAINERS - Except as noted in specified Class descriptions, containers will be furnished by the Show Committee for Horticultural specimen and Challenge Classes. Special containers/supplies may be in short supply and will be available only on a first come basis.
9. WEDGING MATERIAL - Wedging material is permitted in the necks of vases, as long as it is not distracting in any way.

10. POINTS - Specimens may be judged based on the following points scale:

**Specimen Point Scale**

Form	25
Color	20
Substance	15
Stem and Foliage	20
Balance and Proportion	10
Size	10
	<hr/>
Total	100

**Seedling/Sports Point Scale**

Originality	20
Form	20
Color	20
Substance	20
Stem and Foliage	10
Balance and Proportion	5
Size	5
	<hr/>
Total	100

11. DISQUALIFICATION - Disqualification of entries will be made for:
- Misnamed, misclassified, mislabeled, or unlabeled entries.  
Found roses may not be exhibited without an ARS exhibition name.
  - Stem-on-stem (a rose exhibited with a portion of the previous stem growth attached). Exceptions: Shrub roses and Old Garden Roses may be shown stem-on-stem.
  - Presence of foreign substances applied to improve the appearance of the specimen.

- d. Not disbudded. Any class calling for one-bloom-per-stem specimens must be exhibited without side buds, except OGRs and Shrubs. A side bud is defined as growth emanating from a leaf axis having sufficient maturity to display the formation of a stem with or without flower buds. The presence of one or two leaflets or leaves at the leaf axis with no evidence of a stem is cause for penalization but not disqualification.
  - e. Any specimen in violation of ARS or local rose show rules.
12. DISTRIBUTION OF AWARDS - No entry, ribbon, or award may be removed from the show area before the close of the show at 5:00 p.m., except by the direction of the Rose Show Chairman. Award winners must have permission of the Awards Chairman before removing any trophy or award from the show tables. All awards will be distributed by the Show Committee personnel. Exhibitors are responsible for claiming their awards in person or by their designated representative.
13. DISCLAIMER - Your participation as an exhibitor is welcome. All reasonable care will be given to safeguard your exhibits. Neither the Dallas Rose Society, the American Rose Society, the Farmers Branch Senior Center, nor the city of Farmers Branch will be responsible for the loss of, or damage to, entries or property, nor for the injuries to persons attending the show. Liability of all nature is disclaimed.

**DIVISION I**  
**SECTION A - LARGE ROSES**

**CLASS 1 - HYBRID TEA/GRANDIFLORA**

Hybrid Teas or Grandiflora specimens and their climbing counterparts, one bloom per stem at exhibition stage, no side buds.

---

***Queen of Show***

*ARS Gold Medal Certificate*  
**DRS Keeper Trophy**

***King of Show***

*ARS Silver Medal Certificate*  
**DRS Keeper Trophy**

***Princess of Show***

*ARS Bronze Medal Certificate*  
**DRS Keeper Trophy**

***Court of Honor (7 others)***

*DRS Certificate*

**CLASS 2 - HYBRID TEA/GRANDIFLORA SPRAY**

One stem with two or more blooms.

**Keeper Trophy**

**CLASS 3 - HYBRID TEA/GRANDIFLORA FULLY OPEN**

One bloom, no side buds, fresh stamens must show.

**ARS Open Bloom Hybrid Tea Certificate**

**CLASS 4 - FLORIBUNDA**

One Stem, one bloom, no side buds.

**ARS Floribunda, One Bloom Per Stem Certificate**

**CLASS 5 - FLORIBUNDA SPRAY**

One stem with two or more blooms, includes single or semi-double.

**ARS Best Floribunda Spray Certificate**

**CLASS 6 - FLORIBUNDA FULLY OPEN**

One fully open bloom, fresh stamens must show.

**Keeper Trophy**

**CLASS 7 - POLYANTHA SPRAY**

One stem with multiple blooms, naturally grown.

**ARS Best Polyantha Spray Certificate**

**CLASS 8 - CLIMBERS**

Large Flowered Climbers. One stem, one or more blooms naturally grown or disbudded.

**ARS Best Climber Certificate**

**CLASS 9 - CLASSIC SHRUBS**

Shrubs with Hybrid Musk, Hybrid Rugosa, or Hybrid Kordesii class designation. One bloom, with or without sidebuds, or one spray.

**ARS Best Classic Shrub Certificate**

**CLASS 10 - MODERN SHRUBS**

Shrubs that do not have a family designation, excluding roses hybridized by David Austin, which are exhibited in a separate class.

One bloom, with or without sidebuds, or one spray.

**ARS Best Modern Shrub Certificate**

**CLASS 11 - DAVID AUSTIN ROSES**

Roses hybridized by David Austin. One bloom, with or without side buds, or one spray.

**Keeper Trophy**

**CLASS 12 - SPECIES**

One bloom, naturally grown.

**ARS Genesis Award Certificate**

**CLASS 13 - Decorative Form Rose**

One bloom decorative form rose, at exhibition stage, no side buds.

DRS Certificate for most outstanding entry

**CLASS 14 - Found Roses****CLASS 15 - Classic Hybrid Tea or Grandiflora****SECTION B - OLD GARDEN ROSES****CLASS 16 - DOWAGER QUEEN**

Any type classified as an old garden rose and introduced prior to 1867.

Entry tag must show date of introduction, if known.

**ARS Dowager Queen Certificate**

**CLASS 17 - VICTORIAN ROSE**

Any type classified as an old garden rose and introduced in 1867 or later. Entry tag must show date of introduction if known.

**ARS Victorian Rose Certificate**

SECTION C  
MINIATURE/MINI-FLORA

**CLASS 18 - MINI-FLORA**

One bloom, at exhibition stage, must be shown disbudded.

---

***Mini-Flora Queen***

*ARS Gold Medal Certificate*

**DRS Keeper Trophy**

***Mini-Flora King***

*ARS Silver Medal Certificate*

**DRS Keeper Trophy**

***Mini-Flora Princess***

*ARS Bronze Medal Certificate*

**DRS Keeper Trophy**

***Court of Honor (7 others)***

*DRS Certificate*

**CLASS 19- MINI-FLORA SPRAY**

One stem with a spray of two or more blooms.

**Keeper Trophy**

**CLASS 20 - MINI-FLORA FULLY OPEN**

One bloom shown fully open, no side buds. Fresh stamens must show.

**Keeper Trophy**

**CLASS 21 - MINIATURE**

One stem with one bloom, at exhibition stage, must be shown disbudded.

---

***Miniature Queen***

*ARS Gold Medal Certificate*  
**DRS Keeper Trophy**

***Miniature King***

*ARS Silver Medal Certificate*  
**DRS Keeper Trophy**

***Miniature Princess***

*ARS Bronze Medal Certificate*  
**DRS Keeper Trophy**

***Court of Honor (7 others)***

*DRS Certificate*

**CLASS 22 - MINIATURE SPRAY**

One stem with a spray of two or more blooms.

**ARS Miniature Spray Certificate**

**CLASS 23 - MINIATURE FULLY OPEN**

One bloom shown fully open. Fresh stamens must show.

**ARS Best Miniature Open Certificate**

**CLASS 24 - SINGLE MINIATURE**

One bloom with 4-5 petals, fresh stamens must show.

**ARS Best Single Miniature Certificate**

**CLASS 25 - SEMI-DOUBLE MINIATURE**

One bloom with 6-16 petals.

**Keeper Trophy**

## SECTION D NOVICE CLASSES

For exhibitors who have never won a blue ribbon in a horticultural class at a rose show conducted under the rules of the ARS. The best entry in **Classes 23 to 25 will be selected for the ARS Best Novice Certificate**. Blue ribbon winners are eligible for the Courts or other higher awards.

### **CLASS 26 - NOVICE HYBRID TEA/GRANDIFLORA**

One stem with one bloom or spray.

**DRS Certificate and Keeper Trophy**

### **CLASS 27 - NOVICE FLORIBUNDA**

One stem with one bloom or spray.

**DRS Certificate and Keeper Trophy**

### **CLASS 28 - NOVICE MINIATURE/MINI-FLORA**

One stem with one bloom or spray.

**DRS Certificate and Keeper Trophy**

## SECTION E YOUTH CLASSES

For junior exhibitors age 17 years or younger. Exhibitor's age must be on the entry tag. Entries to be placed alphabetically. Exhibitors can enter any number of entries, but only one entry of a given variety. Blue ribbon winners are eligible for the Courts or other higher awards.

### **CLASS 29 - YOUTH HYBRID TEA/GRANDIFLORA**

One stem with one bloom or spray.

**DRS Certificate and Keeper Trophy**

### **CLASS 30 - YOUTH FLORIBUNDA**

One stem with one bloom or spray.

**CLASS 31 - YOUTH MINIATURE/MINI-FLORA**

One stem with one bloom or spray.

**DRS Certificate and Keeper Trophy**

**SECTION F  
JUDGES CLASSES**

For Judges judging in this rose show. Any number of entries may be made, provided each is a different variety.

**CLASS 32 - JUDGES HYBRID TEA/GRANDIFLORA**

One stem with one bloom or spray.

**Eligible for ARS Best Judges Certificate and Keeper Trophy**

**CLASS 33 - JUDGES MINIATURE/MINI-FLORA**

One stem with one bloom or spray.

**Eligible for ARS Best Judges Certificate and Keeper Trophy**

**CLASS 34 - JUDGES FLORIBUNDA, POLYANTHA.**

Single Bloom disbudded or Spray.

Eligible DRS Certificate

**CLASS 35- JUDGES SHRUBS, CLASSIC, MODERN AND AUSTIN.**

Single bloom with or without side buds and sprays.

Eligible DRS certificate

**CLASS 36- JUDGES OLD GARDEN ROSES, SPECIES, DOWAGER QUEEN AND VICTORIAN**

Single Bloom with or without side buds, or Spray.

Eligible DRS Certificate

## SECTION G SEEDLINGS/SPORTS

### **CLASS 37 - LARGE ROSES**

One specimen, one bloom-per-stem, no side buds. Any type large rose.

**ARS Seedling Certificate**

### **CLASS 38 - MINIATURE/MINI-FLORA**

One specimen, one bloom-per-stem, no side buds.

**ARS Seedling Certificate**

## SWEEPSTAKES AWARD LARGE ROSES

The exhibitor winning the greatest number of First Place ribbons in Division I, Sections A, B, and D (Classes 24 & 25). In case of a tie Second Place ribbons will be counted.

**ARS Sweepstakes Certificate**

## SWEEPSTAKES AWARD MINIATURE/MINI-FLORA ROSES

The exhibitor winning the greatest number of First Place ribbons in Division I, Sections C and D (Class 24). In case of a tie Second Place ribbons will be counted.

**ARS Sweepstakes Certificate**

DIVISION II  
SECTION H  
LARGE FLOWERED  
CHALLENGE CLASSES

**CLASS 39 - HYBRID TEA/GRANDIFLORA  
COLLECTION OF 3**

Collection of any three (3) one bloom-per-stem specimens, exhibition stage, in three separate containers provided by the show committee.

**Keeper Trophy**

**CLASS 40 - HYBRID TEA/GRANDIFLORA  
COLLECTION OF 5**

Collection of any five (5), one bloom-per-stem specimens, exhibition stage, in five separate containers provided by the show committee.

**Keeper Trophy**

**CLASS 41 - HYBRID TEA/GRANDIFLORA  
3 STAGES OF BLOOM**

Collection of three stems, one variety, showing three stages of bloom, one bloom 1/4 open, one bloom 1/2 to 3/4 open, and one fully open fresh stamens. Collection to be displayed in separate containers provided by the show committee.

**Keeper Trophy**

**CLASS 42 - HI-LO**

One hybrid tea bloom and one miniature, both shown at exhibition stage, without sidebuds, in separate containers. Except for size, both roses must look similar in color and form. The hybrid tea stem length may be adjusted to compliment the miniature. The miniature must be staged in front of the hybrid tea.

**Keeper Trophy**

**CLASS 43 - MOST FRAGRANT ROSE**

Any variety, one bloom-per-stem or spray in a vase provided by the show committee.

**ARS Most Fragrant Rose Certificate & Keeper Trophy**

**CLASS 44 - BOUQUET BOWL**

Five or more blooms, any type, with no foliage showing, floating in a bowl provided by the show committee. Entry tag must list all varieties.

**Keeper Trophy**

**CLASS 45 - ROSE IN A BOWL**

One hybrid tea or grandifloras bloom at exhibition stage, no foliage showing, floating in a bowl provided by the show committee.

**ARS Best Rose Bowl (Large) Certificate & Keeper Trophy**

**CLASS 46 - ENGLISH BOX**

Six (6) hybrid tea or grandiflora blooms, at exhibition stage, no foliage showing, displayed in a box provided by the show committee.

Sepals are not considered foliage. Entry tag must list all varieties..

**ARS Best English Box Regular Certificate & Keeper Trophy**

**CLASS 47 - PICTURE FRAME**

One bloom, any variety, foliage permitted for presentation of bloom, exhibited in a picture frame provided by the show committee.

**Keeper Trophy**

**CLASS 48 - DINNER NAPKIN**

One bloom-per-stem or spray, any variety, artfully exhibited on a 18" x 18" dinner napkin. Black napkin and floral tube provided by the show committee.

**Keeper Trophy**

**CLASS 49 - FLORIBUNDA PALETTE**

Five (5) floribunda blooms, all different varieties, fully open, fresh stamens must show, no foliage permitted, shown on a palette provided by the show committee. Entry tag must list all varieties.

**Keeper Trophy**

**CLASS 50 - HYBRID TEA/GRANDIFLORA BOUQUET**

Eight (8) or more stems of one bloom-per-stem, no side buds, one or more varieties, exhibited in a container provided by the exhibitor. Entry tag must list all varieties.

**Keeper Trophy**

**CLASS 51 - FLORIBUNDA BOUQUET**

Eight (8) or more stems of one bloom-per-stem and/or sprays, one or more varieties, exhibited in a container provided by the exhibitor. Entry tag must list all varieties.

**Keeper Trophy**

**CLASS 52 - SHRUB BOUQUET**

Eight (8) or more stems of one bloom-per-stem and/or sprays, one or more varieties, exhibited in a container provided by the exhibitor. Entry tag must list all varieties.

**Keeper Trophy**

**CLASS 53 - OGR BOUQUET**

Eight (8) or more stems of one bloom-per-stem and/or sprays, one or more varieties, exhibited in a container provided by the exhibitor. Entry tag must list all varieties.

**Keeper Trophy**

## SECTION I MINIATURE/MINI-FLORA CHALLENGE CLASSES

**CLASS 54 - MINIATURE/MINI-FLORA  
COLLECTION OF 3**

Collection of three (3) blooms, one bloom-per-stem, no side buds, at exhibition stage, displayed in three separate containers provided by the show committee.

**Keeper Trophy**

**CLASS 55 - MINIATURE/MINI-FLORA  
COLLECTION OF 5**

Collection of five (5) blooms, one bloom-per-stem, no side buds, at exhibition stage, displayed in five separate containers provided by the show committee.

**Keeper Trophy**

**CLASS 56 - MINIATURE/MINI-FLORA  
3 STAGES OF BLOOM**

Collection of three (3) stems, one variety, showing three stages of bloom.; one bloom 1/4 open, one bloom 1/2 to 3/4 open, and one fully open with fresh stamens. Collection to be displayed in separate containers provided by the show committee.

**Keeper Trophy**

**CLASS 57- MINIATURE/MINI-FLORA ENGLISH BOX**

Six (6) mini or six (6) mini-flora blooms, at exhibition stage, no foliage showing, displayed in a box furnished by the show committee. Sepals are not considered foliage. All varieties must be listed on the entry tag. Box provided by the show committee.

**ARS English Box Miniature Certificate & Keeper Trophy**

**CLASS 58 - MINIATURE ROSE IN A BOWL**

One miniature bloom at exhibition stage, no foliage showing, floating in a bowl provided by the show committee.

**ARS Best Rose Bowl Miniature Certificate & Keeper Trophy**

**CLASS 59 - MINI-FLORA ROSE IN A BOWL**

One mini-flora bloom at exhibition stage, no foliage showing, floating in a bowl provided by the show committee.

**ARS Best Mini-Flora Rose Bowl Certificate & Keeper Trophy**

**CLASS 60 - ROSE IN A BASKET**

Sixteen (16) or more blooms, one-bloom-per-stem, no side buds, at exhibition stage, one or more varieties, displayed in a single basket provided by the exhibitor. Floral foam, such as Oasis ®, is permitted, but must not show above the rim of the basket.

**Keeper Trophy**

**CLASS 61 - MINIATURE/MINI-FLORA PALETTE**

Five (5) miniature blooms or five (5) mini-flora blooms, all different varieties, no foliage permitted, shown on a palette provided by the show committee.

**Keeper Trophy**

## DIVISION III

### ARRANGEMENTS

#### GENERAL RULES

1. GUIDELINES - The Rose Arrangement Division is governed by the current rules and procedures of the American Rose Society. Rose Arrangement classes are open to all amateur arrangers. Exhibitors are permitted one entry per class. There is no limit to the number of classes entered.
2. TIME - Entries must be in place by **10:00 a.m.** and must remain in place until the closing of the show. All entries received after 10:00 a.m. will be used for display purposes only.
3. ARRANGEMENTS - Roses must be the dominant flower in all arrangements. Fresh plant material (not painted, treated, or tinted) MAY be used unless specifically forbidden. No artificial flowers or foliage, representations of the American flag, artificial fruits or vegetables will be allowed. Dried plant materials may be used where specified. Accessories are permitted unless otherwise stated. Bases will be considered part of the container. All containers are provided by the exhibitor. All roses must have been grown outdoors in a private garden. Style of arrangement must be written on a separate card and place in front of the arrangement.
4. AWARDS - American Rose Society certificate awards will be granted only where merited. ARS certificates may be given to eligible first-place winners scoring 92 points or more, **if the roses are "arranger grown."** Exhibitors must designate "AG" on the upper right-hand corner of the entry tag if competing for an ARS medal certificate. Each class will have only one first place award. Blue ribbon winners in the large flowered section will be considered for large Medal certificates and blue ribbon winners in the Miniature section will be considered for small Medal certificates.

**DRS Certificate and Keeper Trophy**

5. ENTRY TAGS– All roses must be correctly named on the entry tag. Misnaming is subject to penalty. Decisions of the judges are final.

6. SCORING - The following is the official ARS Score Card for arrangement classes:

Conformance - 20 points	<b>20</b>
a. Rose (s) correctly named	
b. Conformance to type of design (style)	
c. Other specific requirements of the schedule (e.g. size, materials, etc)	
Design Principles - 30 points (5 points per principle) Balance, dominance, contrast, rhythm, proportion, scale	<b>30</b>
Perfection of the rose (s) & Condition - 30 points Including condition of other plant material	<b>30</b>
Creativity and Expressiveness - 10 points	<b>10</b>
Distinction - 10 points Unique, sets the design apart, superiority in every respect, includes technical execution and construction	<b>10</b>
<b>Total:</b>	<b>100</b>

---

1st place requires 90 points minimum

2nd place requires 85 points minimum

3rd place requires 80 points minimum

## “Wild Wonderful Weather”

### SECTION A LARGE ROSES

Classes 1-3 not to exceed 24” in width or depth. No restrictions on height.

**CLASS 1 “Denali-Six Million Acres of Wildland, One Ribbon of Road”**

A Traditional Arrangement using line, line-mass, or mass style. Only fresh roses and materials may be used.  
Eligible for ARS Royalty Award and Medal Certificate and Trophy

**CLASS 2 “Bats and Breakfast at Carlsbad”**

A Modern Arrangement using the designer’s choice of style.  
**Eligible for ARS Artist Award and Medal Certificate and Trophy**

**CLASS 3 “Liberty Enlightening the World”**

An arrangement in the Oriental Manner using the Moribana, Oriental Freestyle, or Nageire style and showcasing an expanse of water in a low container or using a tall container.  
**Eligible for ARS Oriental Award and Medal Certificate and Trophy**

## SECTION B MINIATURE ROSES

Classes 4 - 6 not to exceed 10" in height, width, or depth.

- CLASS 4 "High Atop the Empire State Building "**  
A miniature Traditional Arrangement using line, line-mass, or mass style. Only fresh roses and materials can be used.  
**Eligible for ARS Mini-Royalty Award and Medal Certificate and Trophy**
- CLASS 5 "The Grandest of Them All "**  
A miniature Modern Arrangement using the designer's choice of style.  
**Eligible for ARS Mini-Artist Award and Medal Certificate and Trophy**
- CLASS 6 "More Than a Mountain Carving"**  
A miniature Arrangement in the Oriental Style using the Moribana, Oriental Freestyle, or Nageire style, showcasing an expanse of water in a low container or a tall container.  
**Eligible for ARS Mini-Oriental Award and Medal Certificate and Trophy**

## SECTION C JUDGES ARRANGEMENTS

- CLASS 7 LARGE ROSES - "Denali-Six Million Acres of Wildland, One Ribbon of Road"**  
Exhibitor choice of type and style.  
**Eligible for DRS Certificate and Keeper Trophy**
- CLASS 8 MINIATURE - "Denali-Six Million Acres of Wildland, One Ribbon of Road"**  
Exhibitor choice of type and style.  
**Eligible for DRS Certificate and Keeper Trophy**

DIVISION IV  
SECTION D  
PHOTOGRAPHY CHALLENGE

General Rules

This class is open to all amateur photographers only. All photographs will be 8 x 10-inch color photographs of a rose or groups of roses. Photo must be mounted in a picture frame provided by the DRS. Entry tag should include the rose variety, if known. Photographs will be judged 100% on photographic excellence. Exhibitors may enter up to ten entries per class.

**CLASS 9 - “Rose Garden View”**

A color photograph of a rose garden, with or without people. The picture may be in either horizontal or vertical format.

**Eligible for a DRS Certificate and Keeper Trophy**

**CLASS 10 - “A Beautiful Rose”**

A color photograph of a rose bloom ,spray or sprays. Some stem and foliage or other objects may be in the composition, but the rose bloom must be dominate in the photo. The picture may be in either horizontal or vertical format.

**Eligible for a DRS Certificate and Keeper Trophy**

**CLASS 11 - “The Abstract Rose”**

A color photograph of abstract composition of a rose or group of roses. The picture may be in either horizontal or vertical format.

**Eligible for a DRS Certificate and Keeper Trophy**

## DIVISION V

### Naturally Grown Roses

#### General Rules

Only roses that have been naturally grown may be entered in this Division. “Naturally grown” means that the roses have received only minimal spray or fertilizer. The criterion for the judging shall be the inherent attractiveness of the entry as perceived by the general public.

##### **Section A: Specimen Blooms**

The entries in each class can be single blooms or sprays. Grooming requirements are limited to removing any dead blooms or blooms that have disease or insect damage to the extent that it detracts from the beauty of the entry.

##### **Class 1: Earthkind roses**

##### **Class 2: Shrub Roses**

##### **Class 3: Heritage Roses**

##### **Class 4: Modern Roses**

The most outstanding entry in Section A will receive an DRS certificate

##### **Section B: Bouquets**

The entries in this section are bouquets.

**Class 5:** The bouquet shall be in a single container and shall be predominately roses, but may contain other flowers.

The most outstanding entry in Section B shall receive a DRS certificate.

**NOTES**



Thank you for attending our annual  
Fall Rose Show!





